



# Yield Enhancement Network

## Oilseed Rape YEN Harvest Pack 2025 (non-UK)

### Thank you for participating in the Oilseed YEN

This guide will provide you with the information you need to complete your 2025 Harvest Pack.

You will receive a separate pack for each YEN entry you have.

### Welcome Pack checklist

<input type="checkbox"/>	<p><b>Soil Sample:</b> <u>If you have selected this additional service.</u> Sampling instructions on page 2. Collect a representative soil sample of <b>~600g</b> from across the whole field or area to be entered in YEN and send to NRM using the labelled sample bag. Include the enclosed <b>analysis request form</b> with your sample and apply the <b>grey NRM soil analysis label</b> to this.</p> <p>Please post samples confirming the content has no value (~£1) via the courier company to NRM directly at the address shared on page-6.</p>
<input type="checkbox"/>	<p><b>Leaf Samples:</b> <u>If you have selected this additional service.</u> At the <b>Bud set (GS 3.3 – 3.5)</b> send your first leaf sample to Lancrop. Send the second leaf sample at <b>flowering (GS 4.1 – 4.5)</b>. Include the corresponding analysis request form with each sample and complete this with the type of crop entered, the rest of the details on these forms are prepopulated for your entry but please amend if any details are incorrect.</p> <p>Instructions on how to take tissue samples can be found at the below link:  <a href="https://www.yara.co.uk/siteassets/crop-nutrition/farmers-toolbox/analysis/how-to-take-a-sample-for-soil-or-tissue-analysis.pdf/">https://www.yara.co.uk/siteassets/crop-nutrition/farmers-toolbox/analysis/how-to-take-a-sample-for-soil-or-tissue-analysis.pdf/</a></p> <p>Please make sure you place the Lancrop import licence (enclosed with this welcome pack) on the outside of the package to clear the UK customs and confirm the content has no value (P.S. The import licence is complete, so <u>please do not edit this</u>).</p> <p>Please post samples via courier to Lancrop directly at the address shared on page-6.</p>
<input type="checkbox"/>	<p><b>Grab Samples:</b> Instructions are on page 3 with a link to the guidance video. 2-3 weeks before harvest, collect 8 plants <u>cut at ground level</u> from the YEN entry area (Grab Sample) and send in the <b>potato sack</b> provided.</p>
<input type="checkbox"/>	<p><b>Seed Samples:</b> At harvest, collect a representative sample of seed from the combine. Fill the seed sample bags, and send <b>BLUE</b> NRM and <b>RED</b> Sciantec bags together to each of the three laboratories for analysis, using the appropriate coloured labels and return pre-paid packaging.</p> <ul style="list-style-type: none"> <li>○ Use the <b>BLUE</b> labels for NRM nutrient analysis</li> <li>○ Use the <b>RED</b> labels for Sciantec % oil content analysis</li> <li>○ Use the <b>GREEN</b> labels for ADAS TSW analysis</li> </ul>
<input type="checkbox"/>	<p><b>Return Grab and Grain Samples:</b> Please follow the instructions on page 4 to pack and send Grab and Grain Samples.</p>
<input type="checkbox"/>	<p><b>Yield Data:</b></p> <p>Attach the <b>YELLOW</b> label to your Yield Entry Form ( on page-7) and record harvest area, fresh weight, moisture content and a stubble count of average plants per m<sup>2</sup>.</p> <p>Obtain weighbridge tickets at the time of harvest and then take photos of (or scan) these along with the completed Yield Entry form and upload them at <a href="https://www.yen.adas.co.uk/yen-2025-yield-form-submission">https://www.yen.adas.co.uk/yen-2025-yield-form-submission</a>. If using your mobile to upload the documents, you can scan the QR code on the form to open this link automatically.</p>
<input type="checkbox"/>	<p><b>Yield Competition:</b> <u>Entries without yield verification</u> (i.e. weighbridge tickets) will still receive a YEN Report but <u>will not be eligible for any awards</u>. If you are not competing just enter the yield and supporting evidence.</p> <p>If competing, ensure that the yield form includes your YEN field area (minimum 2ha), your harvested weight (keep all your weighbridge tickets), your seed moisture and that your seed sample is sent to Sciantec (to analyse % Oil content to allow us to determine Gross Output yield).</p>

## SOIL SAMPLE INSTRUCTIONS

A soil sample of the field or area to be entered in YEN should ideally be taken before any organic manure or inorganic fertiliser applications have been made. **If it is necessary to sample following an application a minimum period of 3 weeks should be allowed to pass** before doing so and details of any application(s) made provided on the analysis request form.

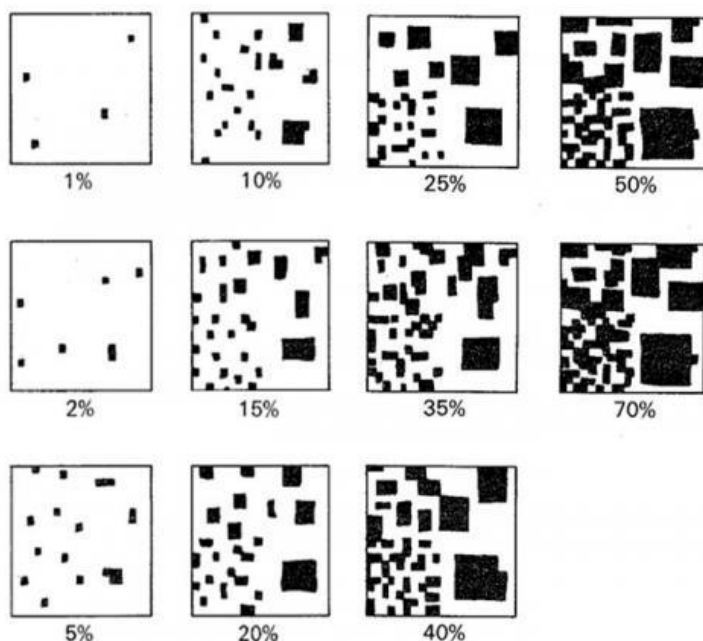
Please complete details on the form of current and previous cropping and whether previous crop residues have been removed or returned to the soil, if the field has a history of regular organic manure applications, please also detail this. The more information you provide with your sample the better the analysis NRM will be able to complete ensuring more reliable, trustworthy and useful results.

Walk a **‘W’ pattern** across the sample area as in the figure below avoiding any irregular patches such as gateways, headlands, and trees, collect about **25-30 soil cores to 15cm depth** and bulk the cores together in the labelled sample bag provided to give a **~600g sample**. Place the soil sample and analysis form into the **BLACK NRM return postage bag** and send it via courier to the NRM lab as per instructions on page 1.

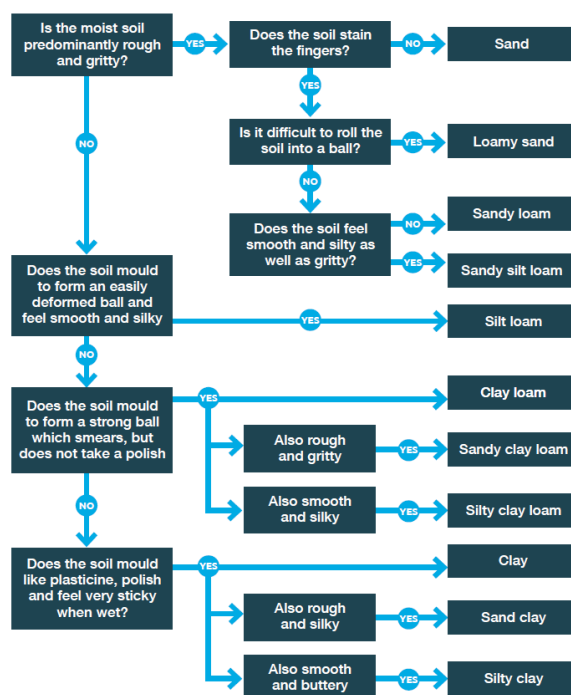


When taking your soil sample please also **record the texture and approximate % stone content of the topsoil** (guidelines for assessing soil texture by hand and estimating stone content are given below). These details should be provided when completing your field and crop details form online, information about which will be emailed to you separately.

Good soil descriptions are vital in allowing us to estimate soil water holding capacity which along with rainfall data we use to determine available water for your crop, a key component in calculating yield potential.



Each quarter of any one square has the same area of black



The results of the soil analysis carried out by NRM on this sample will be included in your annual report. These are also used to calculate various other metrics in the report, including available crop nutrients and efficiency of nutrient uptake.

## GRAB SAMPLE INSTRUCTIONS

The potato sacks enclosed are for use in sending whole-crop 'grab' samples ADAS High Mowthorpe for analysis. It will help ensure trustworthy results if you follow these instructions carefully.

### Collecting your Grab samples

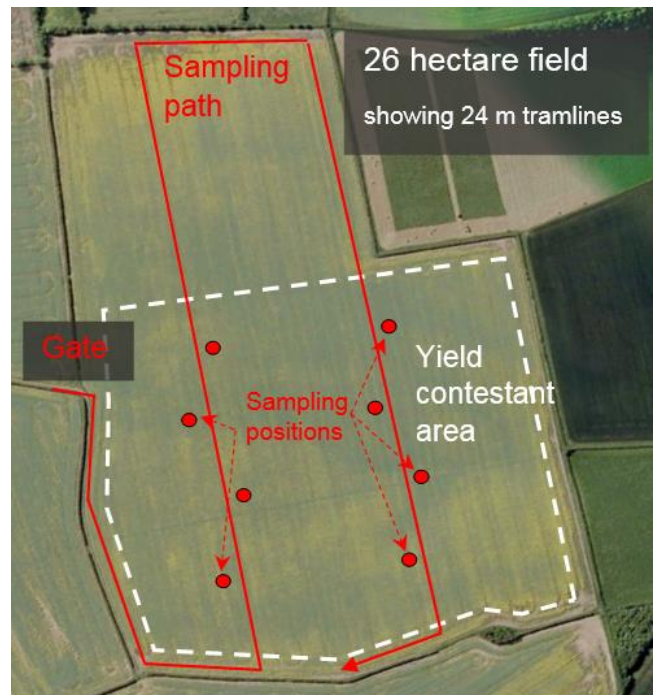


Please scan the above QR code to watch video on how to collect a grab sample

A grab sample of the whole above-ground crop must be taken soon after the crop has reached the stage when glyphosate desiccant would normally be applied (2-3 weeks before harvest). Sampling at this stage will coincide with the end of yield formation and the pods should still be pliable enough not to shatter during sampling. Sampling soon after the desiccant has been applied will make it easier to walk along the tramlines. It is best to sample the crop when the foliage is dry.

You will need the potato sacks and a serrated knife or secateurs.

- Collect **8** randomly selected plants from within the area entered into YEN.
  - Select two typical tramlines running through the intended area for yield measurement.
  - Walk about one fifth of the tramline length, then force your way a couple of metres into the crop.
  - Randomly select a raceme and follow this down to the main stem and cut this off at ground level. Retrieve the whole plant, taking care to untangle racemes from neighbouring plants, and to recover all plant parts.
- Place the plant (pods first) into a sack. If necessary, cut the stems to reduce the overall length – but ensure all parts of the plant are included in the sack, and minimise disturbance of the pods.
- Repeat for the next 3 points along the first tramline, on alternate sides of the tramline, and then repeat on alternate sides as you walk back along the second tramline.



### Packing your grab samples

- Once the plants are placed pod-first into the sacks provided, slip a second sack over the mouth of the first, seal with strong tape, and attached a WHITE pre-paid address label. We have provided 4 sacks; you may need to split your sample between two packages (2 pairs of sacks). Ensure all packages are clearly labelled and return them as per instruction on page-3.

### What will your grab sample tell you?

Data collected from your grab sample will be fed back to you in the end of year report. The metrics we derive from your grab sample include:

- Total Crop Biomass
- Harvest Index – the proportion of total biomass that is seed
- Estimated use of available water
- Estimated % solar radiation captured

## SEED SAMPLE INSTRUCTIONS

We request three seed samples at harvest, each sent directly to separate laboratories for analysis.

### *Collecting your seed sample*

- Take an appropriate size sub-sample (~100g) from each trailer-load of seed close to the time it is being weighed – for example, straight afterwards as it is being tipped. The sample should represent the seed being weighed, so it should be taken from several parts of the trailer load and it should not be cleaned, dried or otherwise changed before it is sent for analysis.
- Combine the sub-samples, and from this fill each of the plastic bags provided. Send one to each of the laboratories below with the appropriate request form, using the postage return packs provide.

### NRM Seed Sample

- Attach one of the **BLUE NRM** labels to one of the bags of seed. Attach the second **BLUE NRM** label to the NRM analysis request form.

**Nutrient analysis carried out by NRM on this sample will be included in your annual report.**

### Sciantec Seed Sample

- Attach one of the **RED Sciantec** labels to one of the bags of seed. Attach the second **RED Sciantec** label to the Sciantec analysis request form.

**% oil content analysis carried out by Sciantec on this sample will be included in your annual report.**

**Note that you must provide this sample to be eligible for Oilseed YEN awards, to enable us to calculate gross output yield (t/ha).**

### ADAS Seed Sample

- Attach one of the **GREEN ADAS** labels to one of the bags of seed, and place it inside the envelope provided.

**ADAS analysis will calculate the TSW, which will be included in your report.**

**TSW is also used to calculate various other metrics in the report, including seeds/m<sup>2</sup>.**

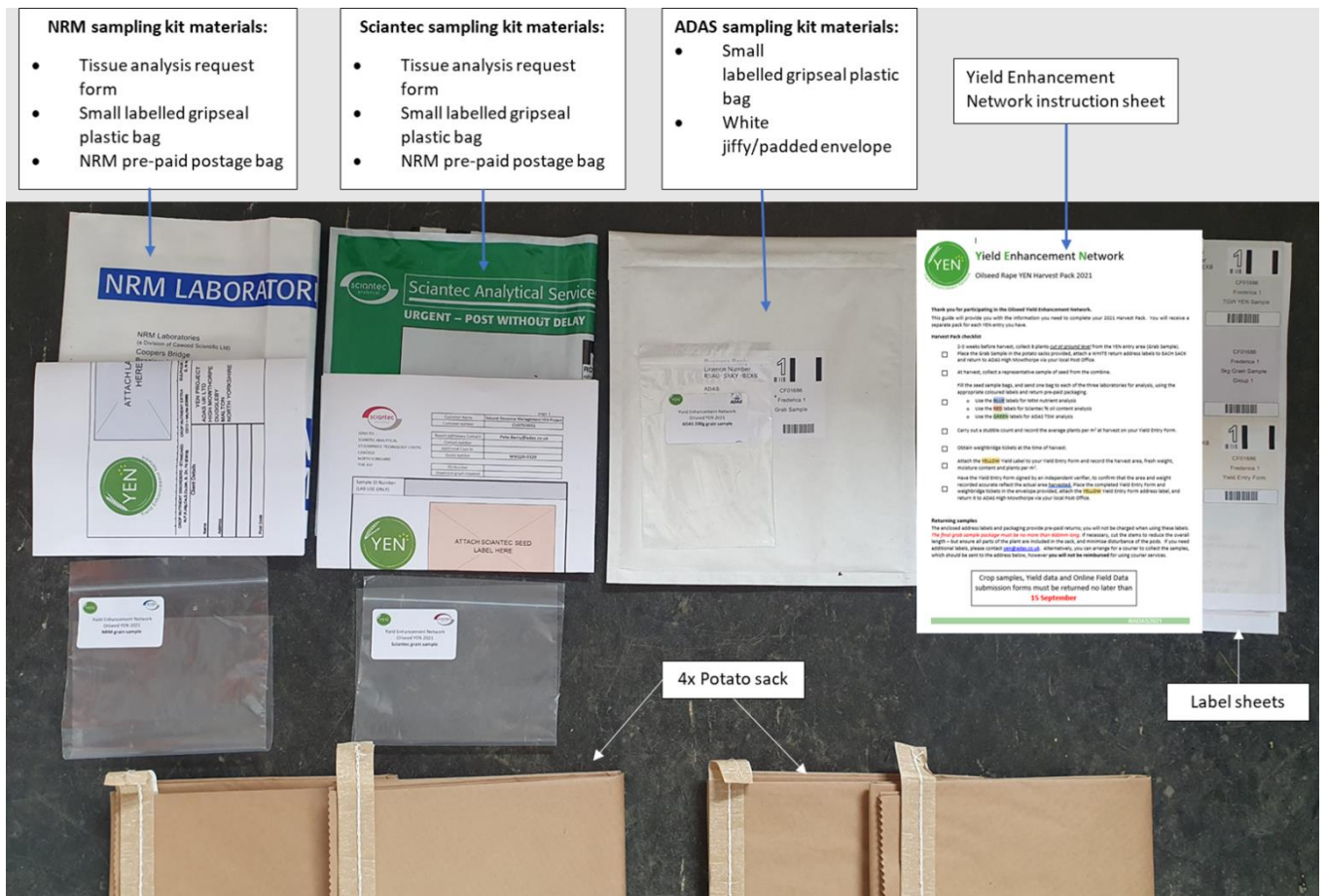
## RETURNING GRAB AND GRAIN SAMPLES FROM OUTSIDE THE UK

- Please post the NRM seed sample analysis pack and Sciantec % oil content analysis sample together directly to NRM at the address shared on page-7, confirming that the content has no value via a **courier company** (pre-paid postage bag will not work for the non-UK entrants; NRM and Sciantec are part of the same group company).
- For the Grab sample, please remember to use the **WHITE** postage label. Pack up the ADAS seed sample along with the grab sample, and send them together to ADAS High Mowthorpe by signed for courier service. Please remember to print the **Custom clearance notice label** (page-8) and stick it outside the ADAS package. This is to help with clearance through UK customs; it confirms that the sample will **not** be used for propagation (i.e. for seed).

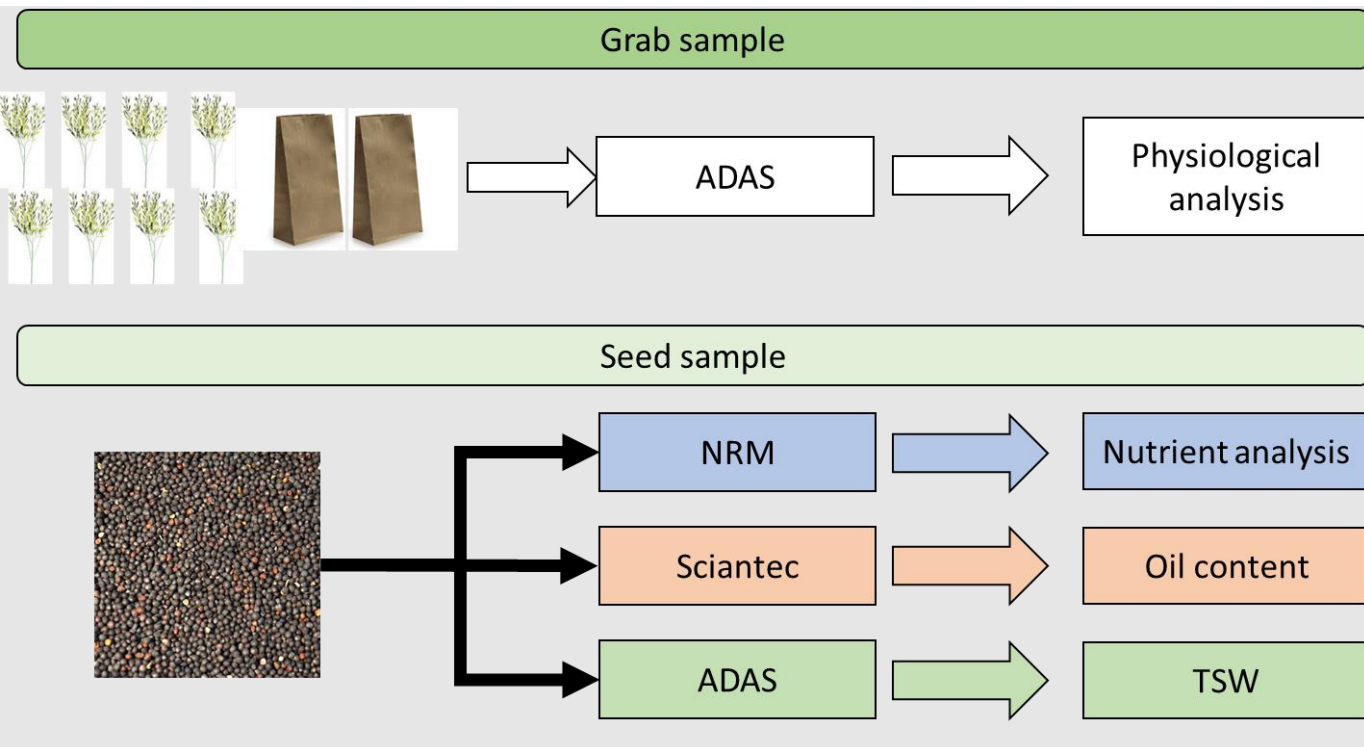
## YIELD ENTRY FORM

- At the time of harvest, complete a stubble count of the area of your YEN field. Record the average plants per m<sup>2</sup> on the Yield Entry Form; record the number of plants in three 1m lengths of row and the row width.
- Attached the **YELLOW Yield Form label** to your Yield Entry Form at the end of this leaflet, and complete all details on the form, including the harvest area, fresh weight at harvest, moisture content, and plants per m<sup>2</sup>.
- In order to compete in this year's competition, you must attach a weighbridge ticket to the Yield Entry Form.
- Scan or take a photo of each document separately - yield form, weighbridge tickets and any supporting materials (e.g. maps), and upload them online <https://www.yen.adas.co.uk/yen-2025-yield-form-submission>.
- If required, please use the QR code on the Yield Form to take you to the above link.

# HARVEST PACK CONTENT SUMMARY



# HARVEST PACK POSTAGE SUMMARY



## RETURN ADDRESSES

<i>Lancrop</i>	<i>ADAS High Mowthorpe</i>	<i>NRM &amp; Sciantec</i>
Yara Analytical Services Pocklington Industrial Estate Pocklington York YO42 1DN	FAO Jo Scratcherd ADAS High Mowthorpe Duggleby Malton YO17 8BP	Natural Resource Management Ltd Coopers Bridge Braziers Lane Bracknell RG42 6NS

Please use a signed-for courier service when sending samples (because previously samples have been lost in transit)


If you need additional labels, please contact [yen@adas.co.uk](mailto:yen@adas.co.uk).

Crop samples, Yield data and Online Field Data forms must  
be returned no later than **30 September**

## CONTACTS

Dhaval Patel	<a href="mailto:Dhaval.Patel@adas.co.uk">Dhaval.Patel@adas.co.uk</a>	07502 658098
Thomas Wilkinson	<a href="mailto:Thomas.Wilkinson@adas.co.uk">Thomas.Wilkinson@adas.co.uk</a>	
Pete Berry	<a href="mailto:Pete.Berry@adas.co.uk">Pete.Berry@adas.co.uk</a>	
Sarah Kendall	<a href="mailto:Sarah.Kendall@adas.co.uk">Sarah.Kendall@adas.co.uk</a>	

Or email [yen@adas.co.uk](mailto:yen@adas.co.uk) for general enquiries.

@adasYEN 

## YEN SPONSORS 2025



The YEN was initiated by industry and is entirely industry funded. We are most grateful to all our sponsors. They not only provide funding, but they are fundamentally involved in management of the YEN and in supporting individual farms in making their YEN entries. The YEN would not exist without them!

Visit [www.yen.adas.co.uk](http://www.yen.adas.co.uk) for sponsors' details, news, and event updates for 2025.



# Oilseed Yield Enhancement Network 2025

Please fill the below form and upload a copy with weighbridge tickets (if applicable) using the below QR code or online at <https://www.yen.adas.co.uk/yen-2025-yield-form-submission>



## Yield Entry Form



Field Name .....

Harvest area (hectares) .....

Fresh seed weight at harvest .....

Average moisture content of seed (%) .....

Stubble count (plants per m<sup>2</sup>) .....

Briefly describe how you calculated your harvest area:  
*Please provide maps where possible.*

Have you included a weighbridge ticket? YES  NO   
*(Required for competition)*

### Combine Yield Monitor/Map (if available)

Yield from combine yield monitor/map .....

Yield monitor make and type .....

GPS accuracy .....

Date yield monitor was last calibrated .....

**DECLARATION**      *I confirm that to the best of my knowledge the information above is correct.*

Name .....

Signature ..... Date.....

**SAMPLES FOR LABORATORY ANALYSIS ONLY**

**PLANT MATERIALS WILL NOT BE USED FOR PROPAGATION  
SEED IS NOT INTENDED FOR PLANTING**

**For any query please contact**

**Dr Dhaval Patel**  
YEN Manager  
RSK ADAS Ltd.

Mobile – 0044 (0) 7502 658098  
E-mail – [Dhaval.Patel@adas.co.uk](mailto:Dhaval.Patel@adas.co.uk)